



**BREAKER
TECHNOLOGY,
INC.**

an Astec company

formerly



Top-off Boom Loading Systems TLB Series



Breaker Technology's new TLB Series of pedestal mounted top-off boom loading systems, specially designed for installation at aggregate plant scale houses to adjust the payload and axle distribution of the haulage trucks leaving the plant.

The pedestal mounted 25' or 30' reach boom outfitted with a .33 to .75 cu. yd. clamshell bucket ensure the trucks leaving your plant are road legal, carrying the maximum aggregate.

Personnel Safety

The scale house operations personnel can safely add or remove aggregate from the truck and move material front to back to adjust axle loading. All this can be done without the operator climbing into the truck box or returning to the stock piles which necessitates re-weigh before ticketing.

Increased Production

The smooth flow of trucks from the stock pile over the scales and out the gate ensure the maximum sales of material. These systems ensure all trucks leaving the aggregate plant are transportation legal, eliminating costly fines to truck operators and quarries.

Heavy Duty Construction

Engineered and built for the complex side, torsion and bending loads experienced while adjusting the load and axle distribution during the final weigh out at the scale house.

No Obligation Survey

BTI engineers are available to survey customer facilities and develop installation drawings to match your specific needs.

Breaker Technology, Inc.

Eastern

30625 Solon Industrial Pkwy
Solon, OH 44139
Tel: (440) 248-7168
Fax: (440) 248-8645

Western & Mexico

3464 Durahart Street
Riverside, CA 92507
Tel: (909) 369-0878
Fax: (909) 369-8281

Breaker Technology, Ltd.

Canada & International

35 Elgin Street North
Thornbury, Ontario N0H 2P0
Tel: (519) 599-2015
Fax: (519) 599-6803

www.rockbreaker.com
e-mail: sales@rockbreaker.com



TLB Top-off Booms

Approximate Working Ranges	Item	Unit	TLB25	TLB30
Maximum Reach	A	ft in	25' 1"	30' 3"
		M	7.6	9.2
Maximum Reach at 15' Above Ground	B	ft in	21' 7"	27' 5"
		M	6.6	8.4
Minimum Reach at 15' Above Ground	C	ft in	13' 2"	15' 5"
		M	4.0	4.7
Maximum Working Depth	D	ft in	7'	7'
		M	2.1	2.1

TLB Boom Specifications	Unit	TLB25	TLB30
Nominal Horizontal Reach	ft in	25	30
	M	7.6	9.1
Swing Arc - Standard		360° (non-continuous)	
Swing Arc - Optional		360° (continuous)	
Max. Lifting Capacity (at Boom Nose)	lbs	3,000	2,500
	kg	1,361	1,134
Boom Weight (excluding Power Pack & Bucket)	lbs	9,050	9,670
	kg	4,114	4,395
Static Overturning Moment	ft-lbs	135,400	135,580
	N-M	183,602	183,846
Power Pack (Reservoir Volume)	USgal	50	
	I	189	
Power Pack (size)	H.P.	30	

Clamshell Specifications	Unit	Clamshell Capacity (cu. Yd.)*			
		.33	.50	.60	.75
Weight	lbs	610	705	810	985
	kg	277	320	368	448
Open Length	in	57	57	57	57
	mm	1,448	1,448	1,448	1,448
Bucket Cutting Width	in	20	25.5	31.5	39
	mm	508	648	800	990

* Bucket size and material density must be within maximum boom lift capacity.

Turntable Construction

For concrete or structural steel sub base. Anchored with 1.5" diameter anchor bolts for endurance. Large surface area disperses foundation loading. Constructed of high strength steel for durability. 360° non-continuous swing.

Slewing Assembly

Designed for extended, service-free operation. Large diameter (37") slew bearing with gear drive. Hoist cylinder mounts are reinforced by two vertical plates.

Power Pack

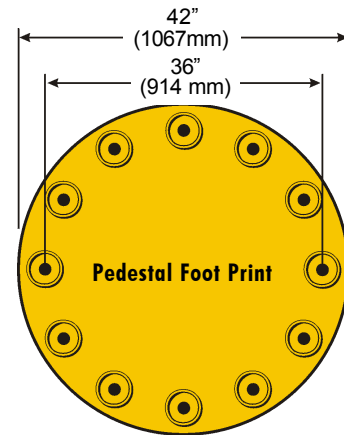
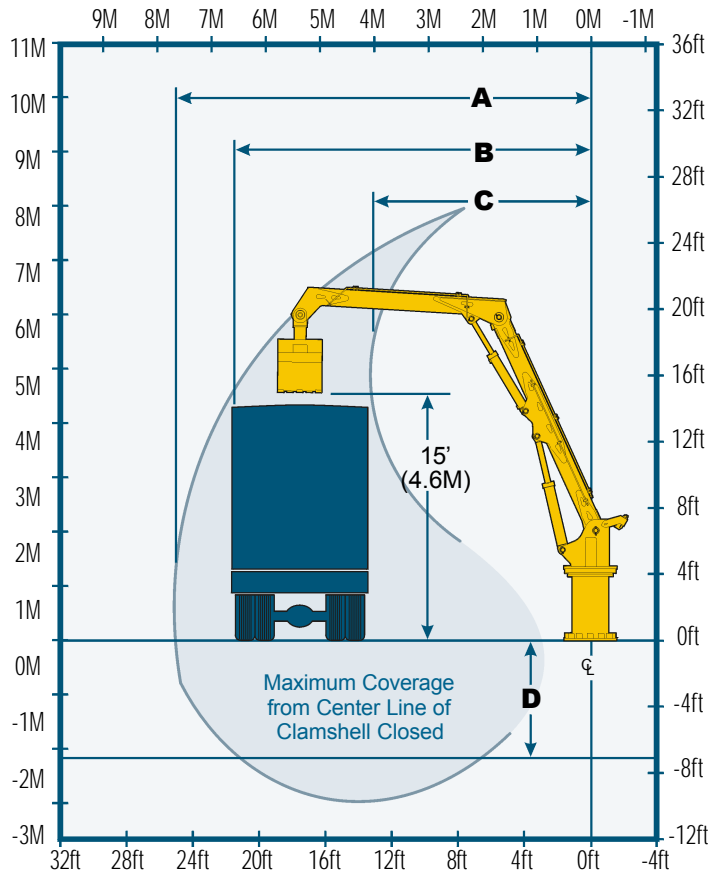
Power packs come complete with a pressurized tank, low oil switch, immersion heater, pressure and return filters.

Simplified Control Valve

The simplified control valve provides the correct flow and pressure for each function and provides excellent control and maneuverability of the unit.

Electro/Hydraulic Joysticks

Electro/hydraulic joystick control panel for operation in the control house or outside for greater visibility.



Other TLB Features Include:

- Compact Base Size
- Oversize Pins
- Oversize Anchor Bolts
- Shock Absorbing Base Design

Options:

- Portable Remote Control
- Radio Remote Control
- Continuous 360° Rotation through Rotary Fluid Joint
- Bucket Rotation

AUTHORIZED DEALER



Optional Joysticks