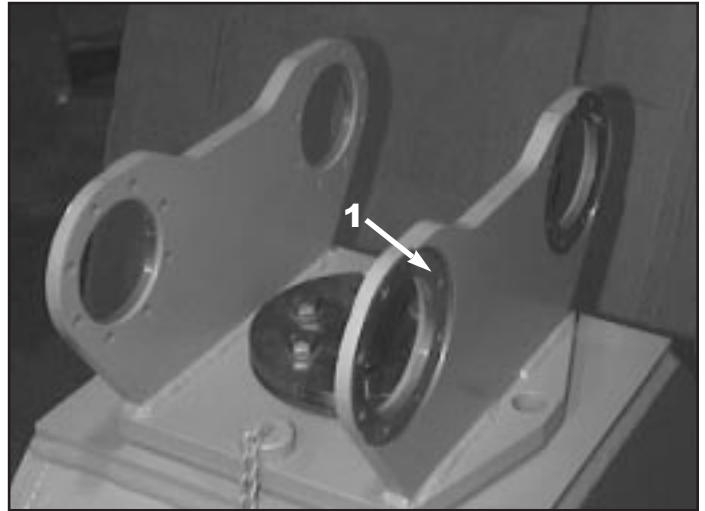


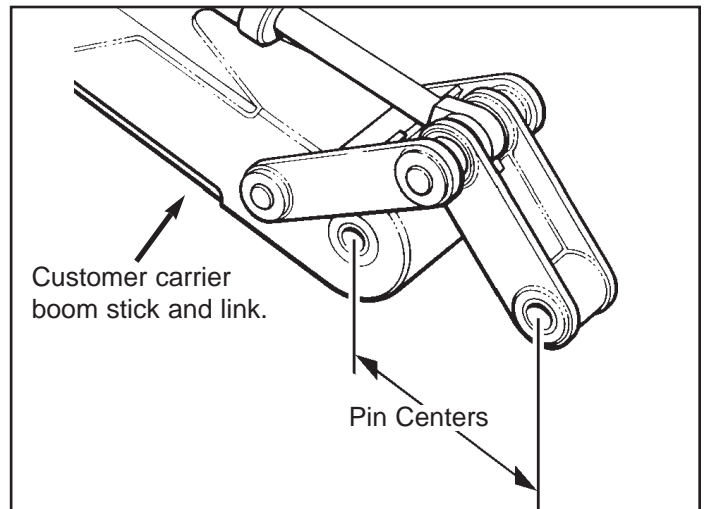
Universal Adjustable Bushing for Quick Attach Mounting

This document provides instructions on the installation of Teledyne's new Quick Attach Mounting system. These instructions apply to Teledyne's TC90 Compactor and Teledyne Hydraulic Breakers, model TB225, TB325, TB425, TB625.

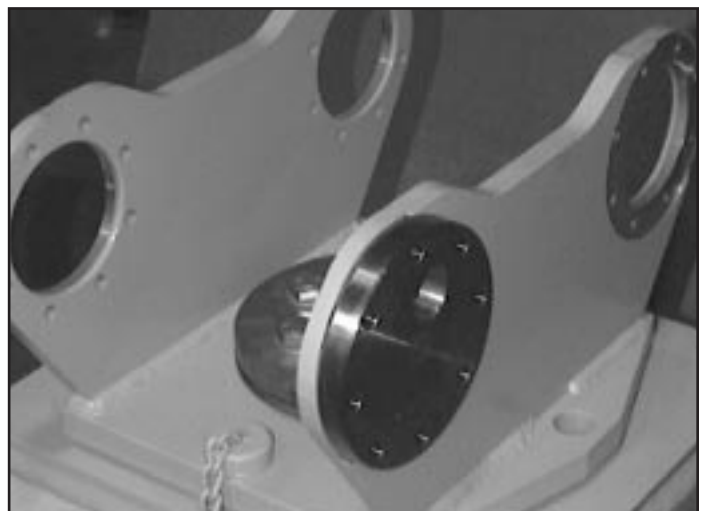
1) Clean the bushing mating surfaces (1) in the mounting bracket.



2) Determine the pin center dimensions on your carrier.



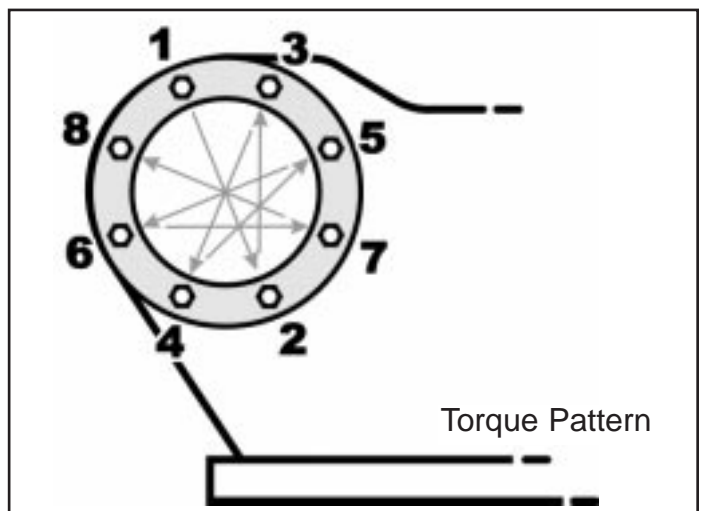
3) Insert bushings into the mounting bracket. Rotate bushings to achieve this dimension with the holes. Bushing holes should be above the center line of the bushings.



4) Install Nord-Lock washers and bolts. Smear blue Locktite on bolt threads. Note: Nord-Lock washers have jagged edges facing each other.



5) Torque bolts to 80 ft/lbs, following the torque pattern shown.



6) *For Quick Attach Applications:* Insert pins.
For stick and link applications: line up the carrier stick and link with the two mounting bracket holes, and insert pins.



7) Secure pins with a locking quick pin.



TELEDYNE SPECIALTY EQUIPMENT **CM Products**

LANCASTER FACILITY

1858 CEDAR HILL RD.,
LANCASTER, OHIO.
43130 U.S.A.
PH. 1-800-567-8267
FAX. 519-599-6154

RIVERSIDE FACILITY

3464 DURAHART ST.
RIVERSIDE, CALIF.
92507 U.S.A.
PH. 909-369-0878
FAX. 909-369-8281

THORNBURY FACILITY

35 ELGIN ST.,
THORNBURY, ONT.
N0H 2P0 CANADA
PH. 519-599-2015
FAX. 519-599-6803